



Master Electric Convection Oven

Item: _____
 Quantity: _____
 Project: _____
 Approval: _____
 Date: _____

Master Electric Convection Oven

Models:

- MCO-ES-10 MCO-ES-20 MCO-ED-10 MCO-ED-20



Model MCO-ES-10

Standard Features:

- Master 450 Solid State Digital control with Cook 'n' Hold and 150°F (66°C) to 500°F (260°C) temperature range. 100 hour timer
- Auto Setback, and Auto Cool Down
- 2-speed fan control (high & low) w/3/4HP fan motor
- Total of 10.4 kW loading per oven cavity
- Stainless steel front, sides, top, and legs
- 60/40 dependent door design with double pane thermal window in both doors and interior lighting
- Full Length, stainless steel positive door closure
- Patented "Safety Door System"
- Porcelain enameled oven interior with covered corners
- 24" cooking cavity height w/6 chrome plated oven racks on 13-position rack guides

- 1 year limited parts & labor warranty (USA & Canada only)
- 5 year limited door warranty, excluding window (USA & Canada only)
- Double deck models have suffix 20

Optional Features:

- Master 455 -Digital control with Cook' n' Hold and Core Probe
- Window in left hand door w/ interior lighting
- Stainless steel solid doors
- Stainless steel oven interior
- Extra oven racks
- 4 swivel casters w/front brakes
- Low profile casters w/front brakes (double ovens only)
- Open base with rack guides & shelf (stainless steel)
- Back enclosure (stainless steel)
- 460 volt, 3 phase
- 50 cycle components

Specifications:

Garland Master full-size standard depth or deep depth (Prefix MCO-ED) electric convection oven. 10.4 kW/cavity, 3/4 HP fan motor with two speed fan control. Master 450 Digital Control. Auto-Set Back, energy saving and Auto Cool Down features Porcelain enameled oven interior with covered corners, Six (6) oven racks and 13-position rack guides. Interior measures 29"(736mm) W x 24" (610mm) H x 24" (610mm) D for standard depth and 29" (736mm) W x 24" (610mm) H x 28" (610mm) D for deep depth. Stainless steel front, sides, top and legs. 60/40 dependent door design with double pane thermal window in both doors and interior lighting. Models with suffix 20 are double decked. Specify voltage and phase.

NOTE: Ovens supplied with casters must be installed with an approved restraining device.



Garland Commercial Industries, LLC
 185 East South Street
 Freeland, PA 18224
 Phone: (570) 636-1000
 Fax: (570) 636-3903

Garland Commercial Ranges Ltd
 1177 Kamato Road,
 Mississauga, Ontario
 L4W 1X4 CANADA
 Phone: 905-624-0260
 Fax: 905-624-5669

Enodis UK LTD
 Swallowfield Way,
 Hayes, Middlesex
 UB3 1DQ ENGLAND
 Telephone: 081-561-0433
 Fax: 081-848-0041

Enodis®

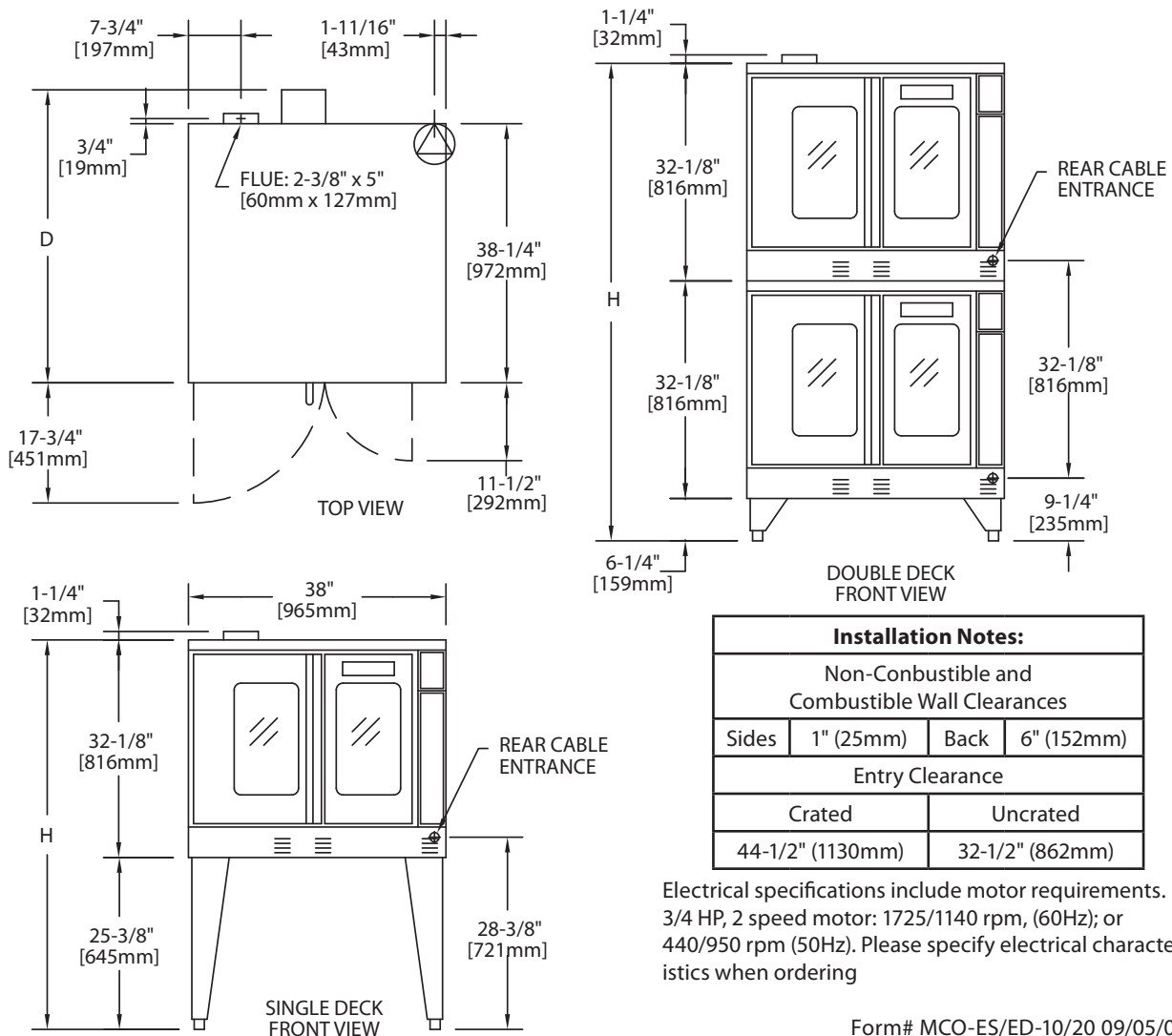
Model	Interior Dimension (per oven)			Exterior Dimension			Ship Wt./Size	
	W:In(mm)	H:In(mm)	D:In(mm)	W:In(mm)	H:In(mm) ¹	D:In(mm)	Lbs./Kg	Cu Ft
MCO-ES-10	29(436)	24(610)	24(610)	38(965)	57-1/2(1416)	41-1/4(1048)	460/210	58.5
MCO-ES-20	29(436)	24(610)	24(610)	38(965)	70-1/2(1791)	41-1/4(1048)	920/415	117
MCO-ED-10	29(436)	24(610)	28(711)	38(965)	57-1/2(1416)	44-1/2(1130)	530/240	58.5
MCO-ED-20	29(436)	24(610)	28(711)	38(965)	70-1/2(1791)	44-1/2(1130)	1060/480	117

¹ Height with or without standard casters. Height with low profile casters (double deck) is 68-1/2" (1740mm).

Model ²	Total kW	Nominal Amperes Per Line (includes 3/4 HP fan motor)																
		208v/1Ph	240V/1Ph	208V/3Ph			240V/3Ph			460V/3Ph			380V/3Ph ³			415V/3Ph		
				X	Y	Z	X	Y	Z	X	Y	Z	X	Y	Z	X	Y	Z
MCO-ES-10	10.4	50	43	30	30	28	26	26	24	14	14	13	15	13	13	16	14	14
MCO-ED-10	10.4	50	43	30	30	28	26	26	24	14	14	13	15	13	13	16	14	14

² NOTE: Double deck models with suffix - "20-S" are provided with individual power supply connections

³ Total Kw rating for 380/3 phase models is 9/0



Form# MCO-ES/ED-10/20 09/05/08)